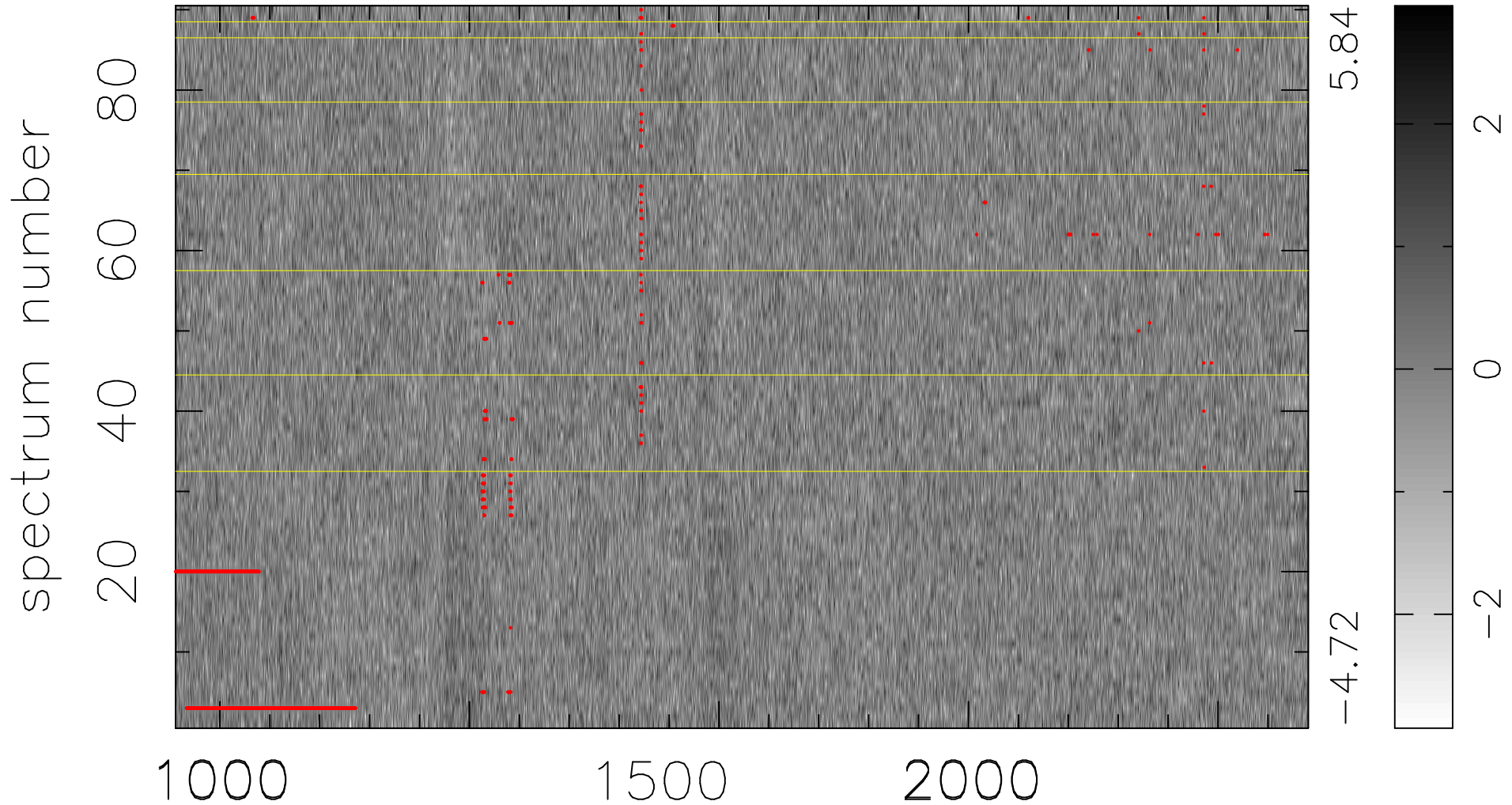


$$\chi(\lambda, t) = ( \text{Data} - \text{Model } \text{AC}_5\text{B}_6\text{F} ) / \sigma \chi$$

$$\chi^2 / (408600 - 5358) = 0.906 \Rightarrow 0.996$$

4540x90



bad:1325=0.32%  $\lambda$  (Å)  $z = 2.78212$