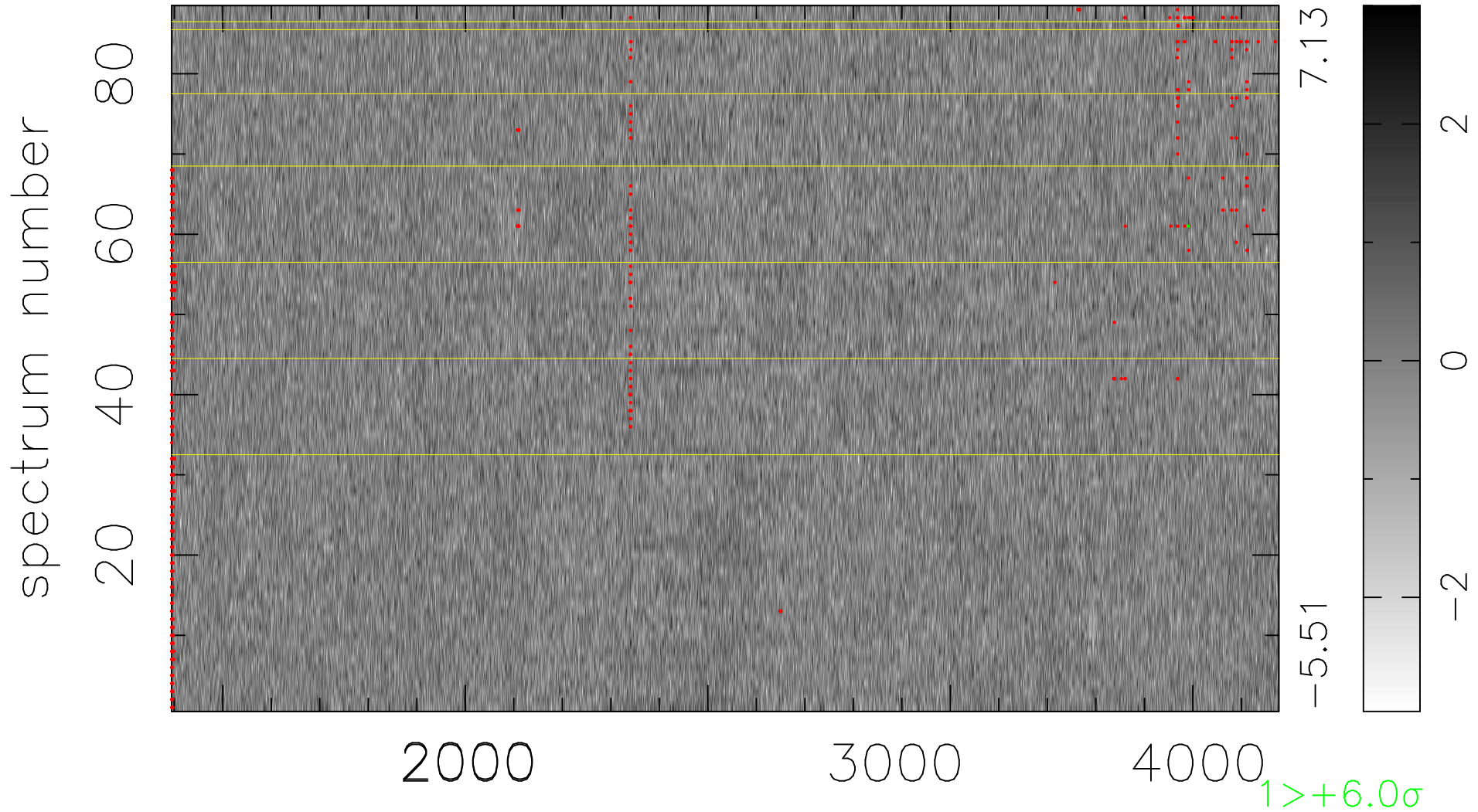


$$\chi(\lambda, t) = (\text{Data} - \text{Model } \text{AC}_5\text{B}_4\text{F}) / \sigma \chi$$

$$\chi^2 / (401808 - 5171) = 0.893 \Rightarrow 1.007$$

4566x88



bad:615=0.15%

λ (Å) $z = 1.38982$