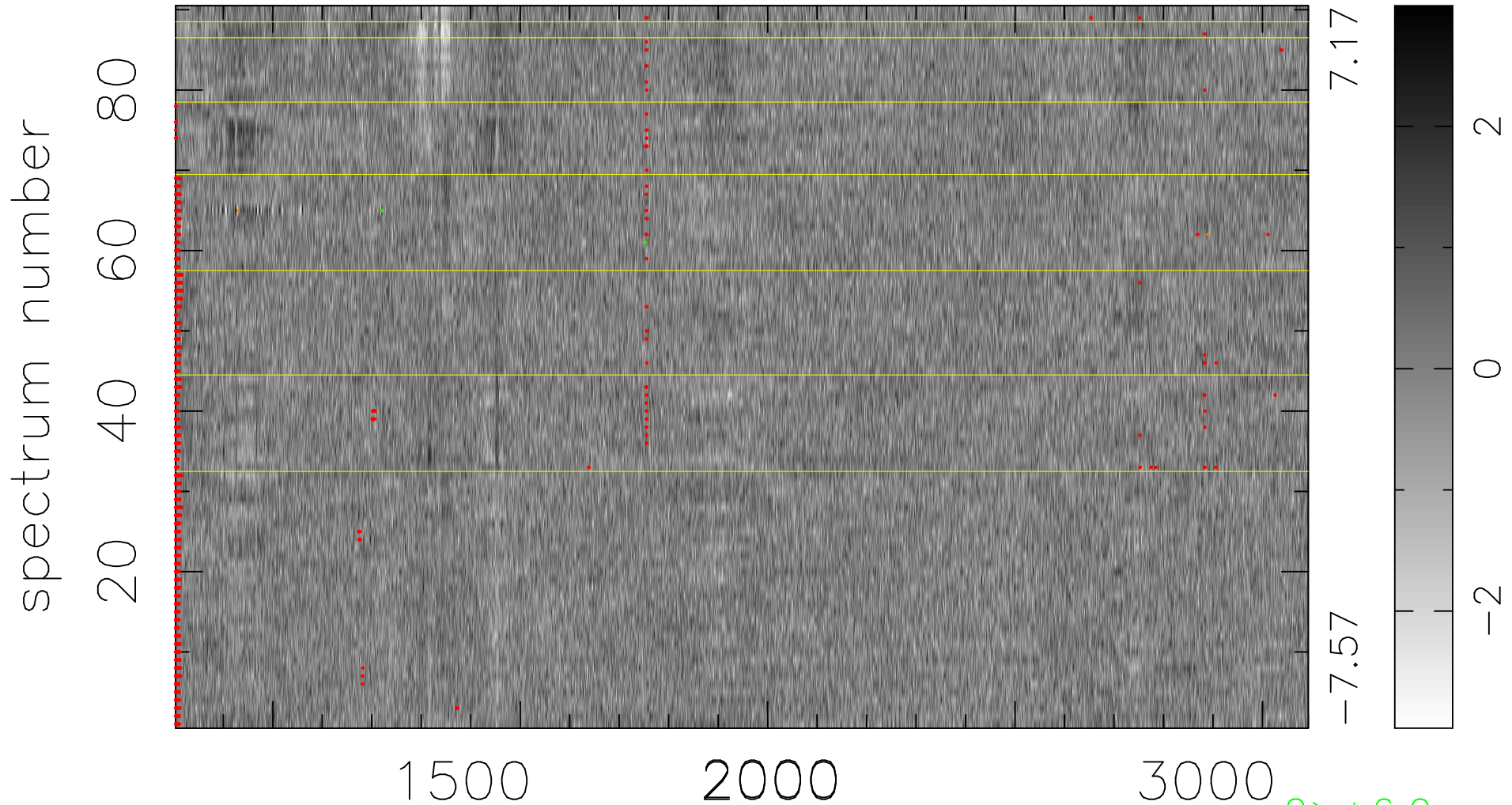


$$\chi(\lambda, t) = (\text{Data} - \text{Model AC}_5\text{F}) / \sigma \chi$$

$$\chi^2 / (412110 - 5342) = 0.938 \Rightarrow 1.007$$

4579x90



bad:1297=0.31% λ (Å) $z = 2.12955$

2 > +6.0 σ

4 < -6.0 σ