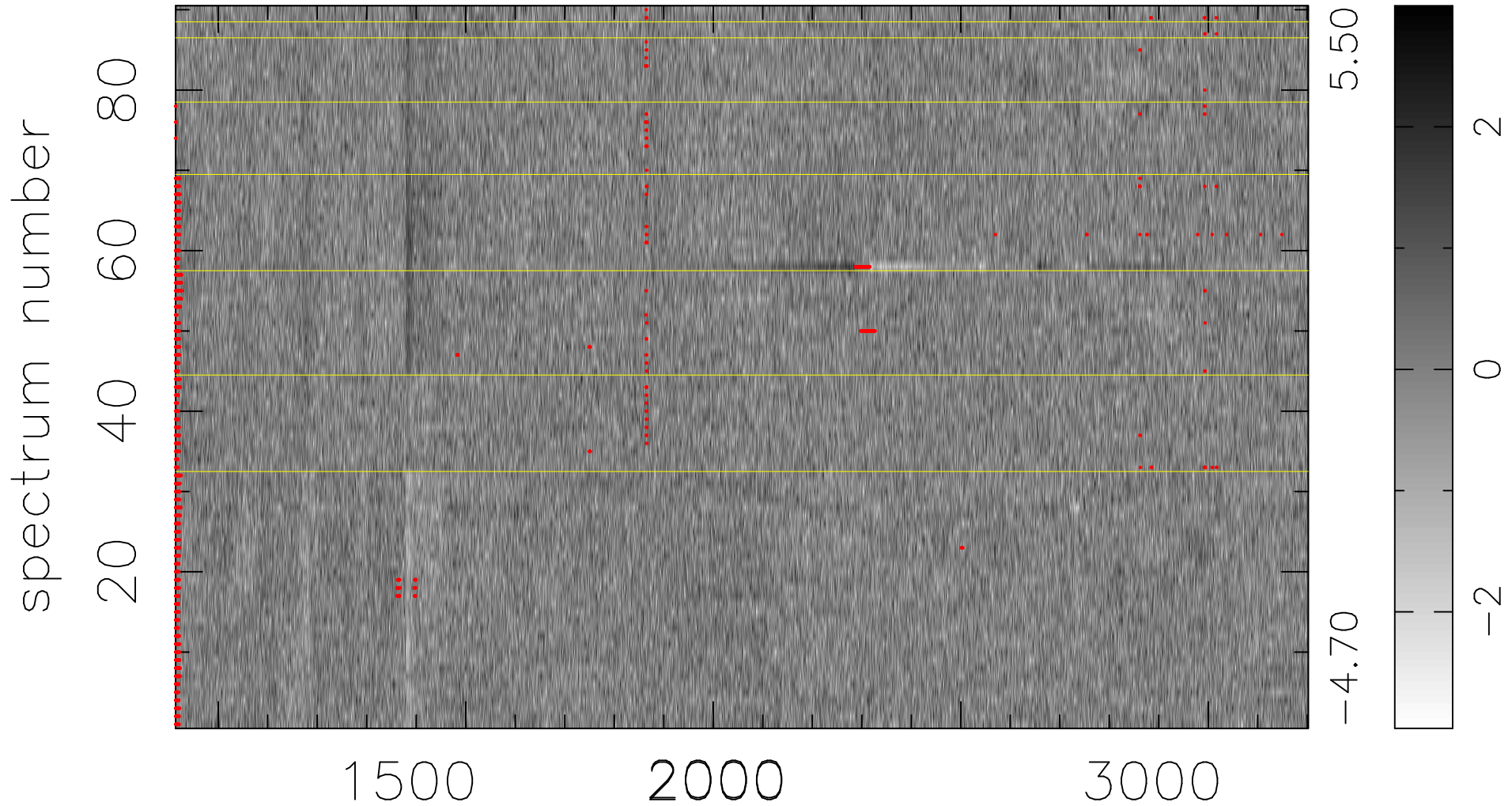


$$\chi(\lambda, t) = (\text{Data} - \text{Model } \text{AC}_5\text{B}_7\text{F}) / \sigma \chi$$

$$\chi^2 / (411930 - 5461) = 0.924 \Rightarrow 1.008$$

4577x90



bad:1408=0.34% λ (Å) $z = 1.97526$