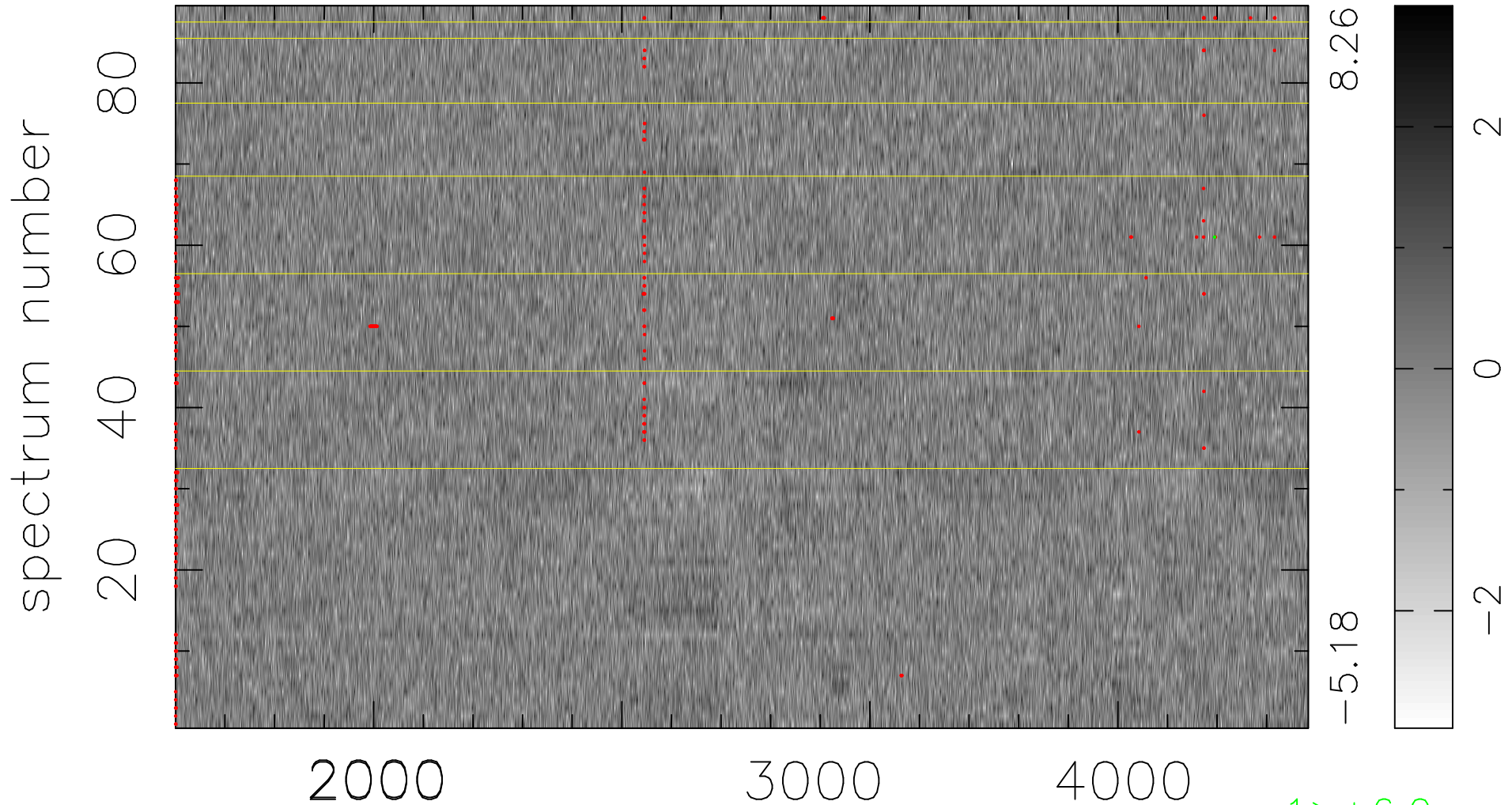


$$\chi(\lambda, t) = (\text{Data} - \text{Model } \text{AC}_5\text{B}_3\text{F}) / \sigma \chi$$

$$\chi^2 / (406463 - 5103) = 0.901 \Rightarrow 1.008$$

4567x89



bad:356=0.088% λ (Å) $z = 1.17505$