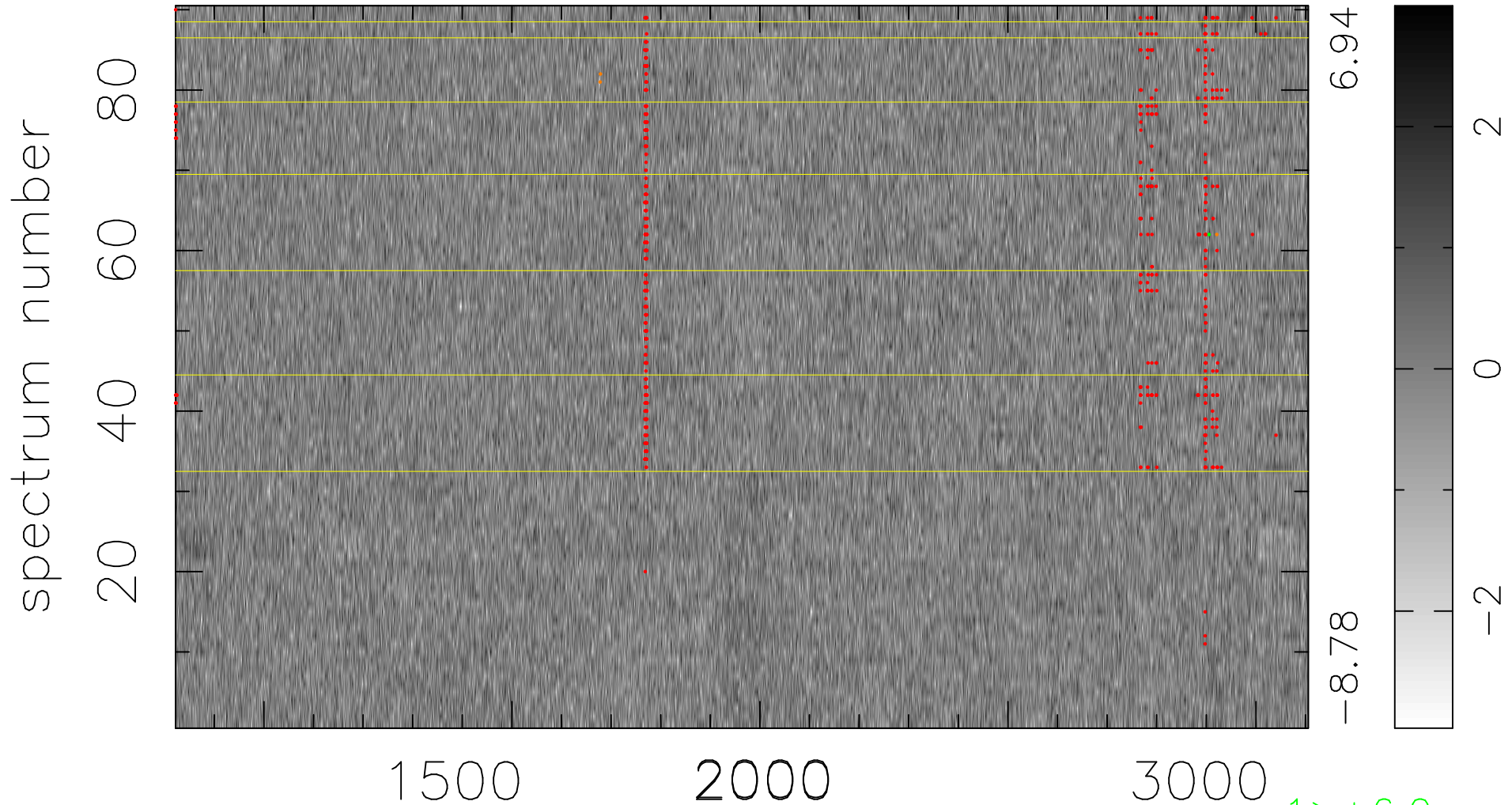


$$\chi(\lambda, t) = (\text{Data} - \text{Model AC}_5\text{B}_7\text{F}) / \sigma \chi$$

$$\chi^2 / (411120 - 5432) = 1.010 \Rightarrow 1.007$$

4568x90



bad:630=0.15%

λ (Å) $z = 2.10736$

1 > +6.0σ

3 < -6.0σ