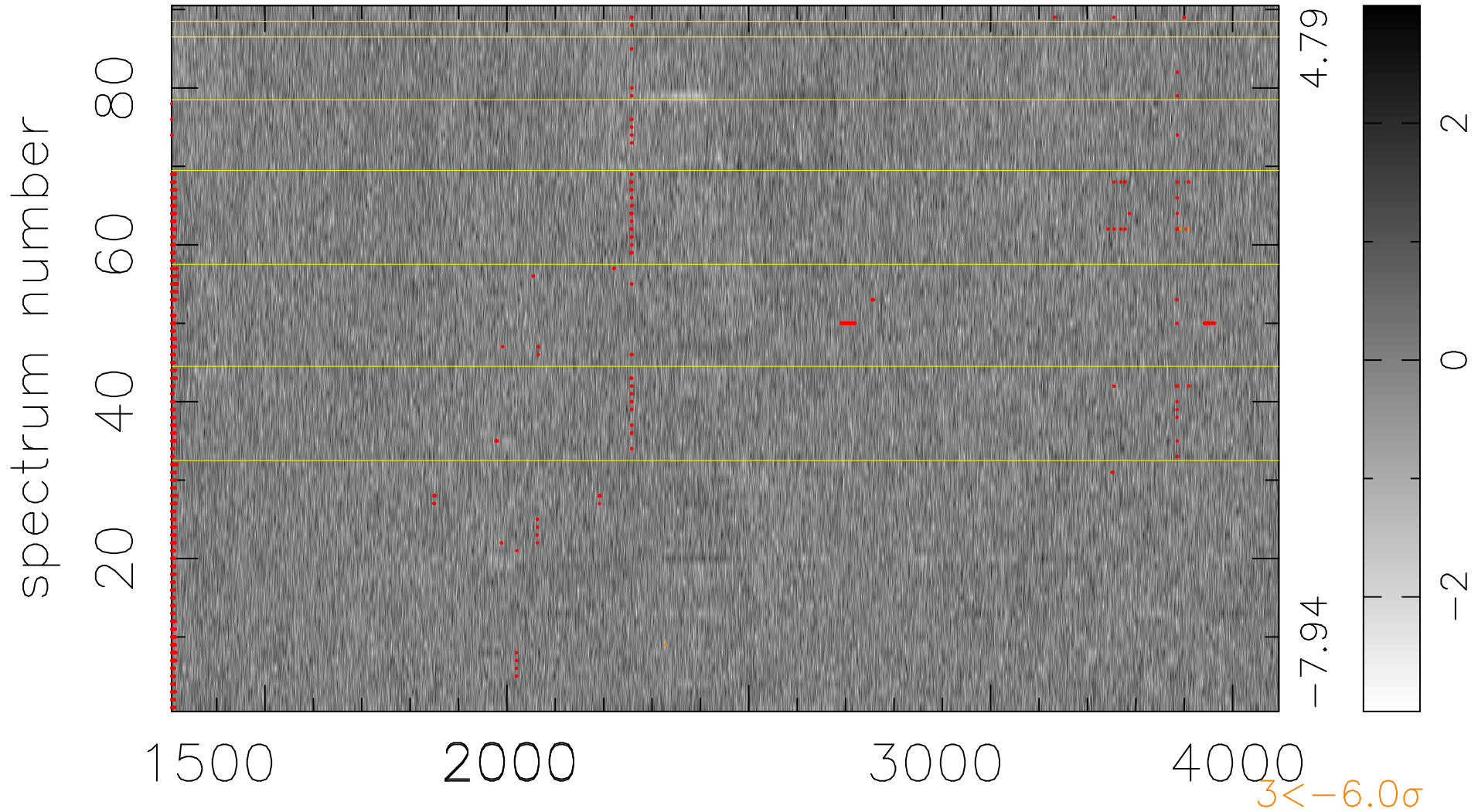


$$\chi(\lambda, t) = (\text{Data} - \text{Model } \text{AC}_5\text{B}_4\text{F}) / \sigma \chi$$

$$\chi^2 / (412020 - 5211) = 0.928 \Rightarrow 1.007$$

4578x90



bad:1273=0.31% λ (Å) $z = 1.48304$