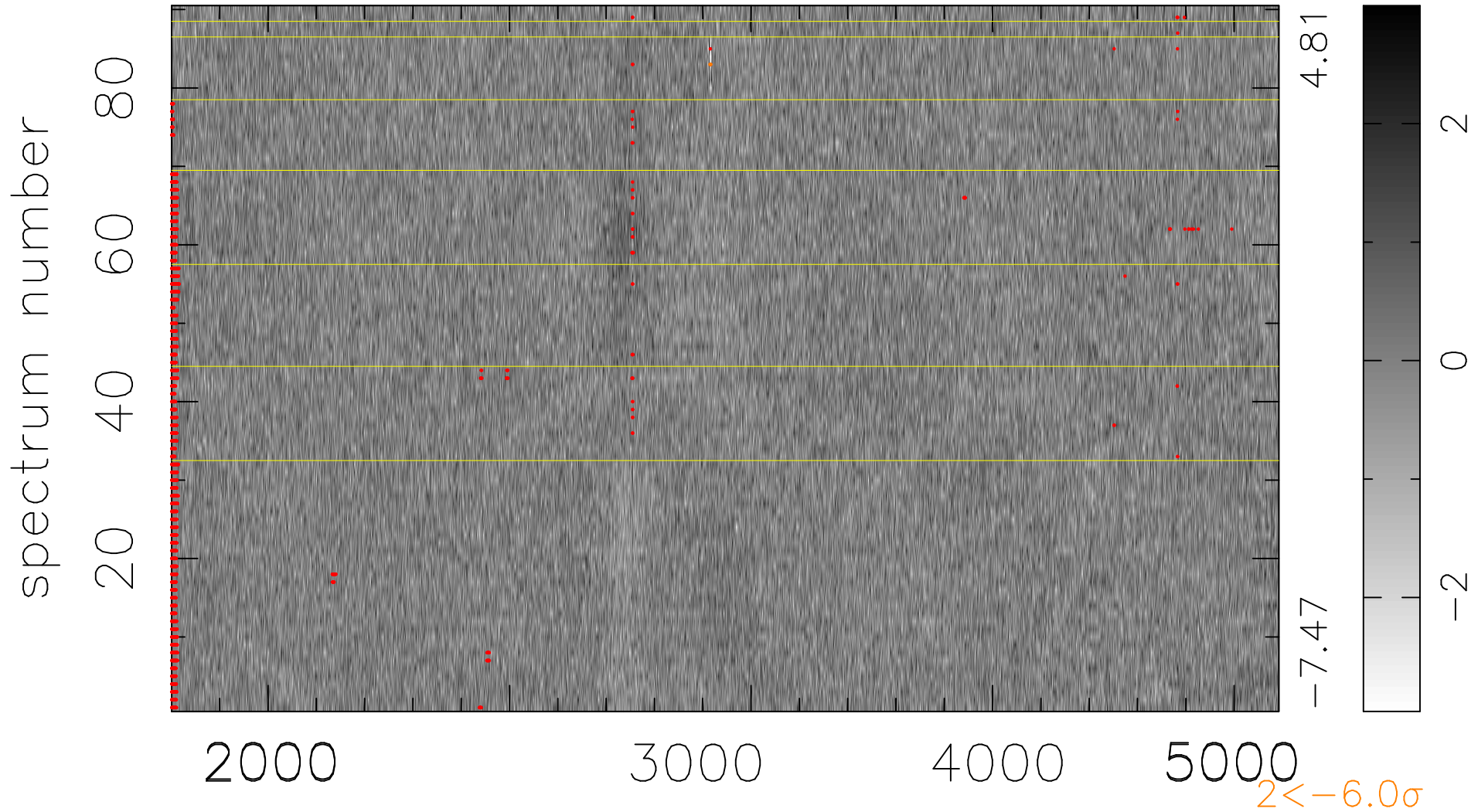


$$\chi(\lambda, t) = (\text{Data} - \text{Model AC}_5\text{F}) / \sigma \chi$$

$$\chi^2 / (412650 - 5044) = 0.923 \Rightarrow 1.007$$

4585x90



bad:1699=0.41% λ (Å) $z = 0.97510$

$2 < -6.0\sigma$