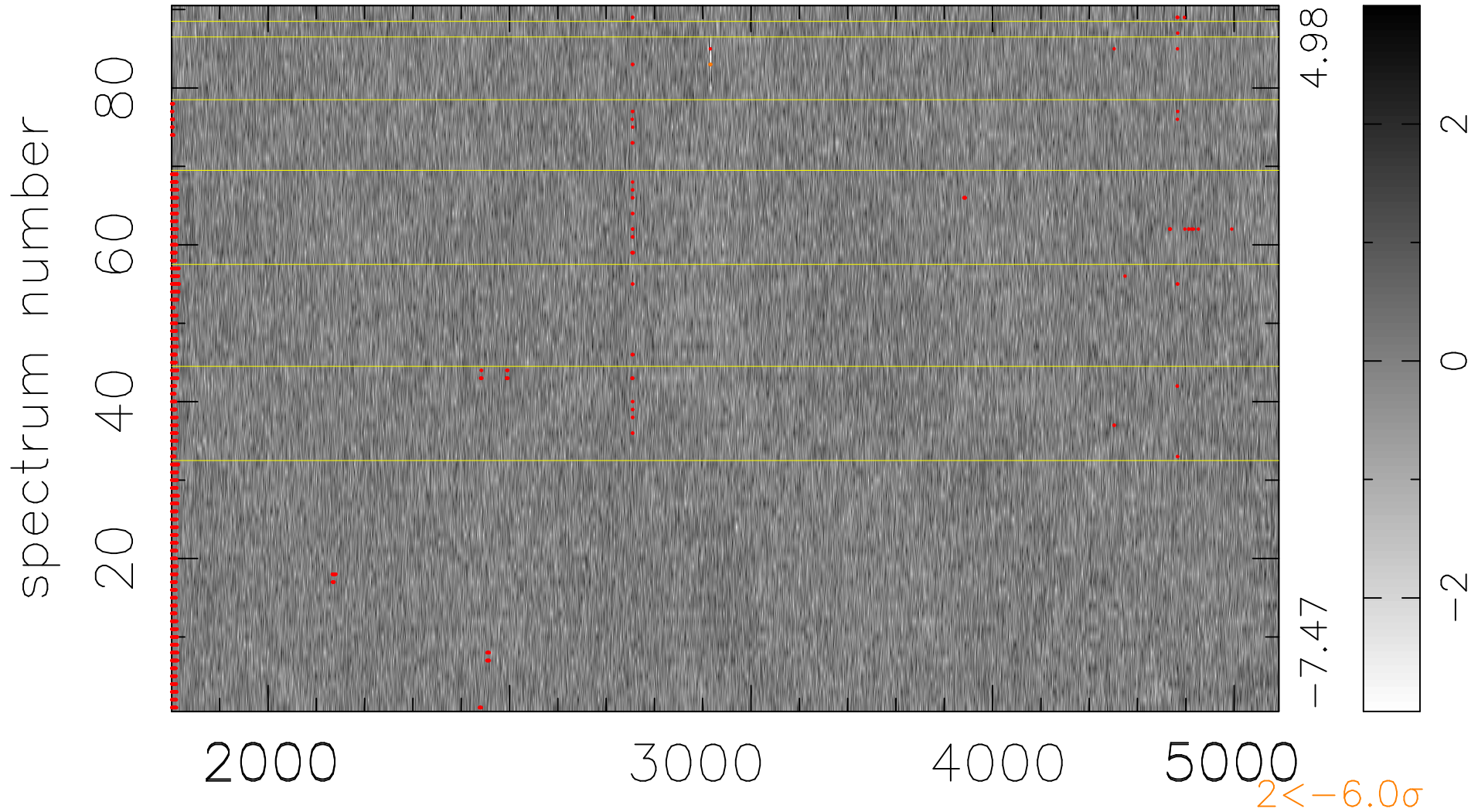


$$\chi(\lambda, t) = ( \text{Data} - \text{Model } \text{AC}_5\text{B}_4\text{F} ) / \sigma \chi$$

$$\chi^2 / (412650 - 5146) = 0.920 \Rightarrow 1.007$$

4585x90



bad:1699=0.41%  $\lambda$  (Å)  $z = 0.97510$