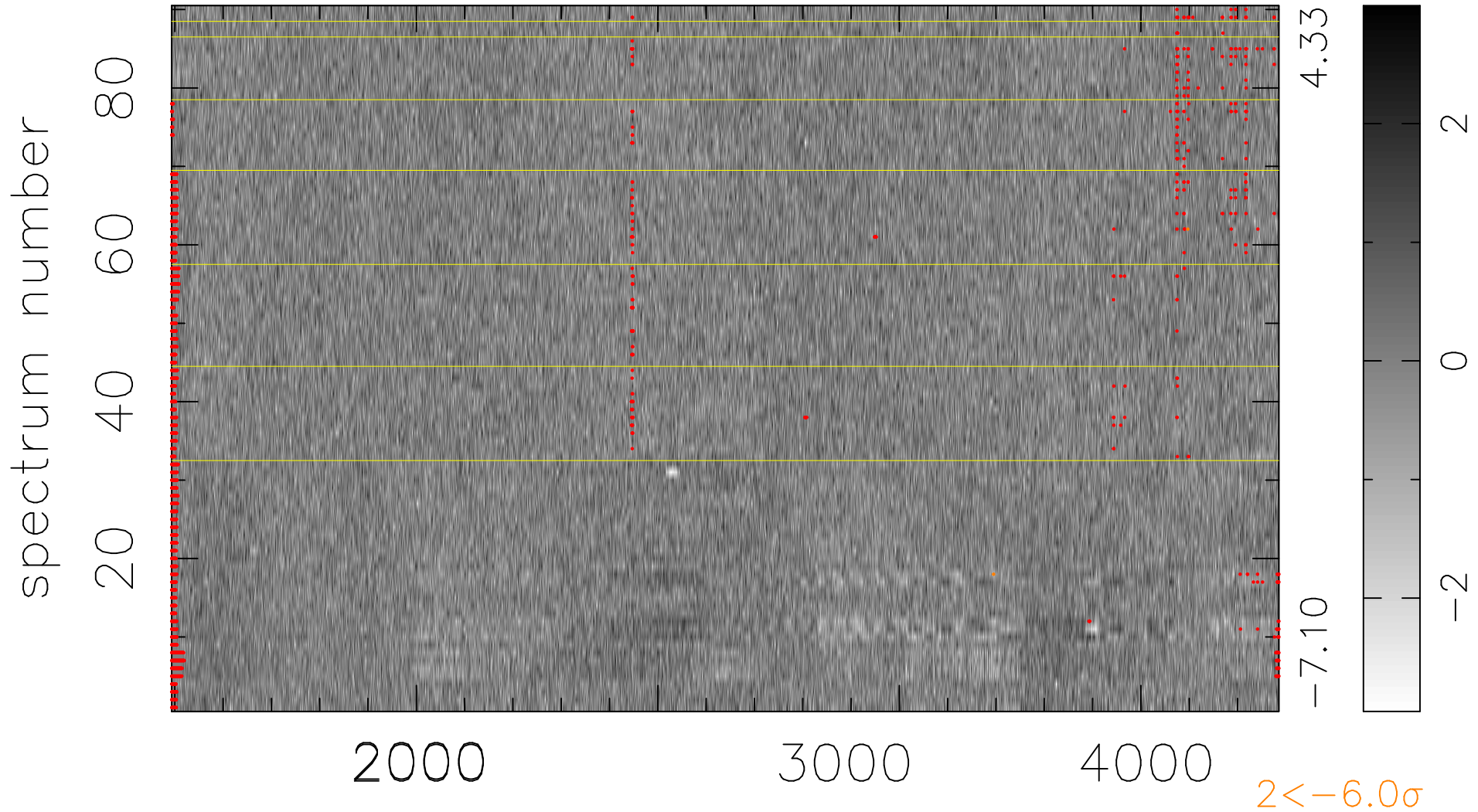


$$\chi(\lambda, t) = (\text{Data} - \text{Model } \text{AC}_5\text{B}_3\text{F}) / \sigma \chi$$

$$\chi^2 / (412650 - 5109) = 0.968 \Rightarrow 1.006$$

4585x90



bad:2005=0.49% λ (Å) $z = 1.27560$