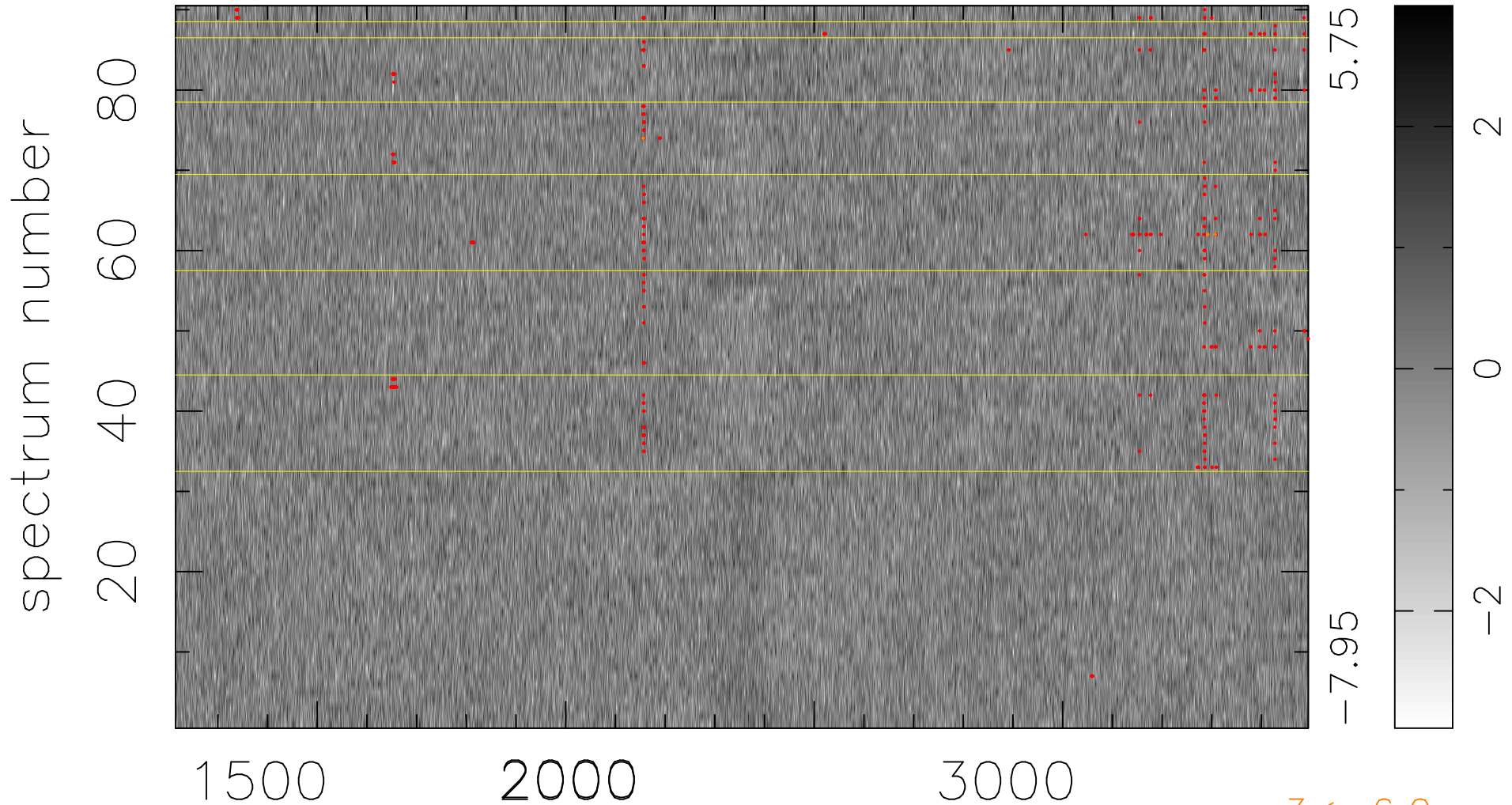


$$\chi(\lambda, t) = (\text{Data} - \text{Model } \text{AC}_5\text{B}_5\text{F}) / \sigma \chi$$

$$\chi^2 / (410310 - 5316) = 0.975 \Rightarrow 1.007$$

4559x90



bad:321=0.078% λ (Å) $z = 1.60066$

$3 < -6.0\sigma$