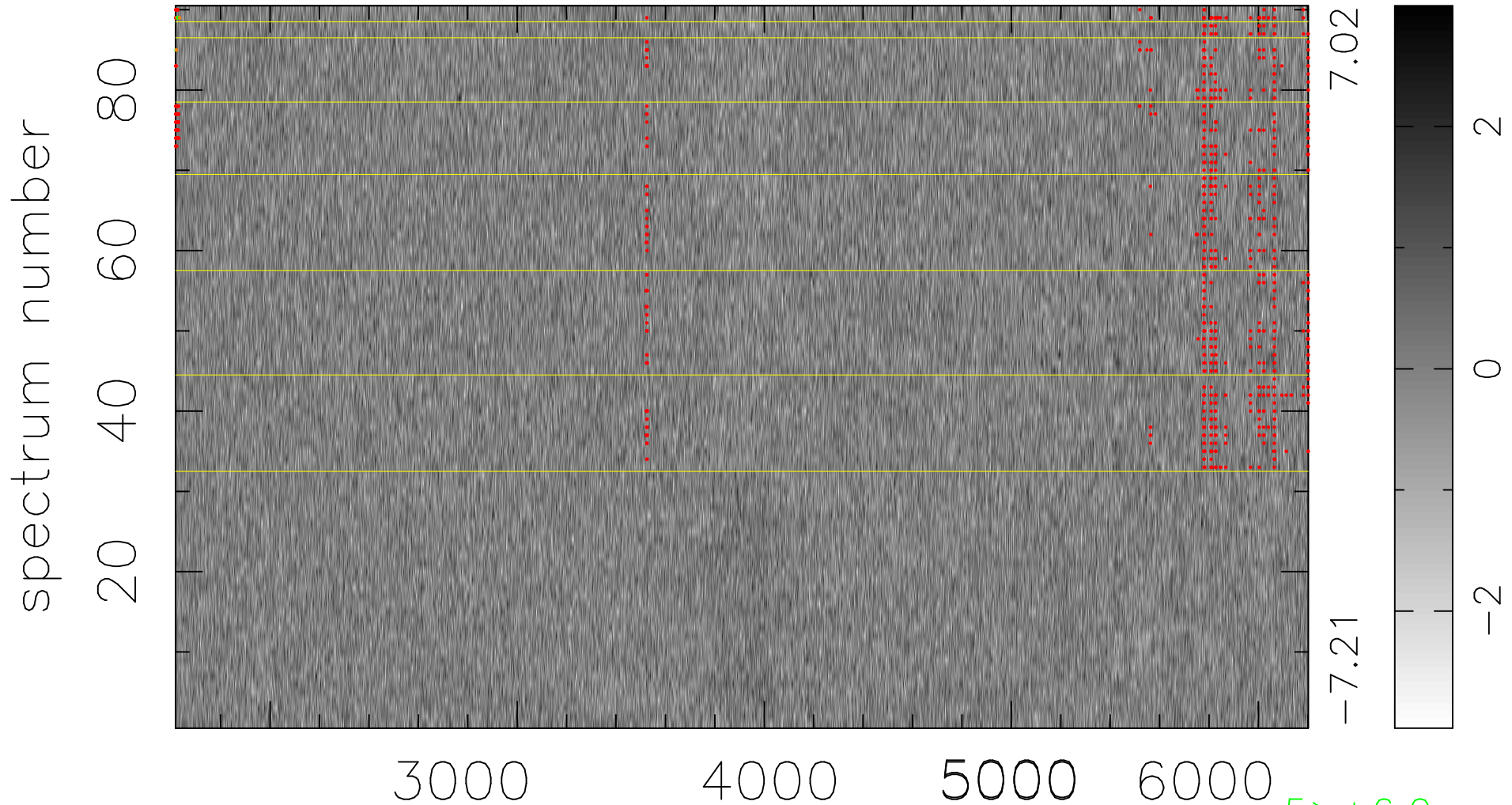


$$\chi(\lambda, t) = (\text{Data} - \text{Model } \text{AC}_5\text{B}_4\text{F}) / \sigma \chi$$

$$\chi^2 / (412650 - 5240) = 0.899 \Rightarrow 1.007$$

4585x90



bad:764=0.19%

λ (Å) $z = 0.56328$

5 > +6.0 σ

4 < -6.0 σ