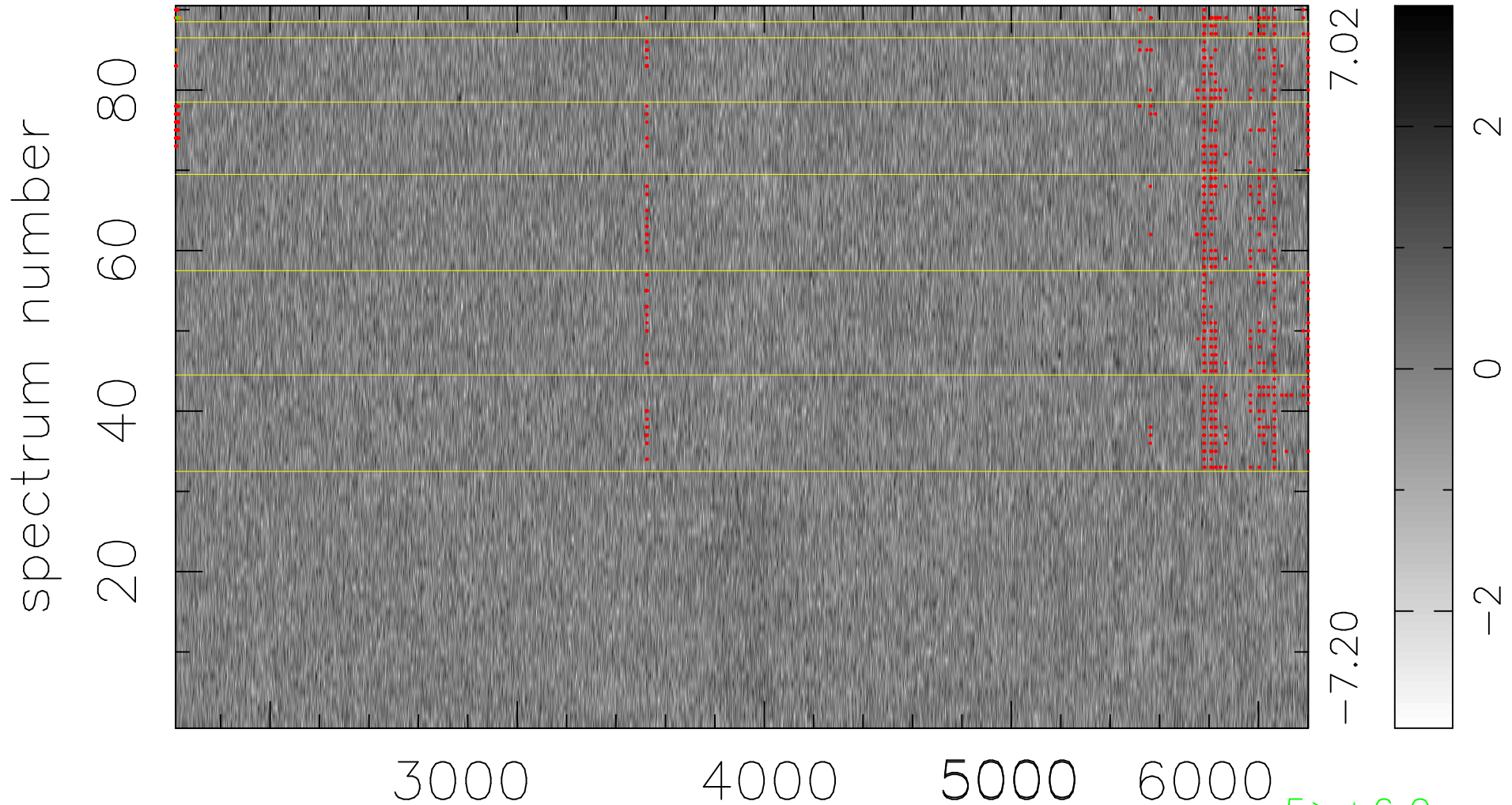


$$\chi(\lambda, t) = ( \text{Data} - \text{Model AC}_5\text{F} ) / \sigma \chi$$

$$\chi^2 / (412650 - 5062) = 0.900 \Rightarrow 1.007$$

4585x90



bad:764=0.19%

$\lambda$  (Å)  $z = 0.56328$

5 > +6.0σ

4 < -6.0σ