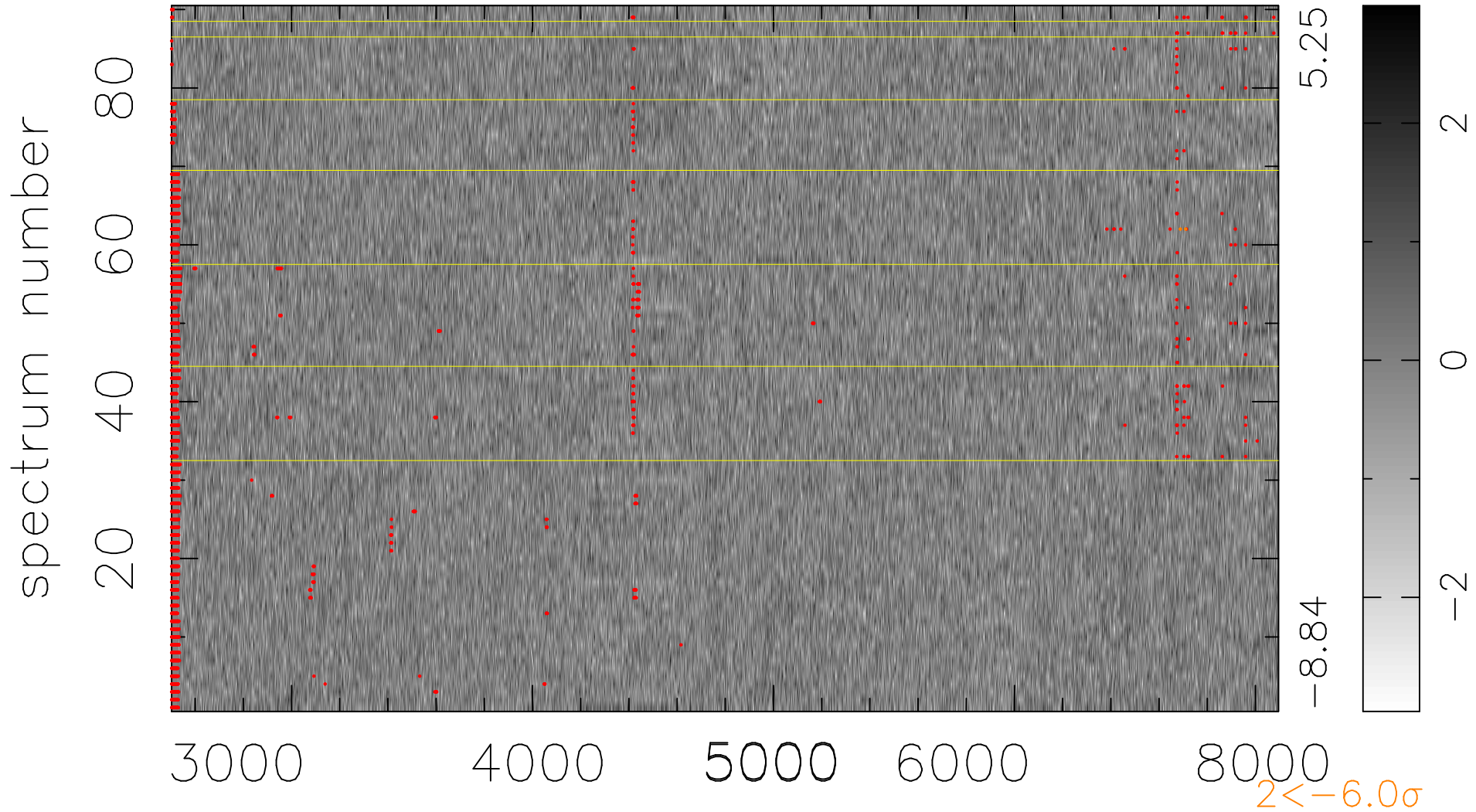


$$\chi(\lambda, t) = ( \text{Data} - \text{Model } \text{AC}_5\text{B}_3\text{F} ) / \sigma \chi$$

$$\chi^2 / (413460 - 5183) = 1.036 \Rightarrow 1.008$$

4594x90



bad:2647=0.64%  $\lambda$  (Å)  $z = 0.27251$