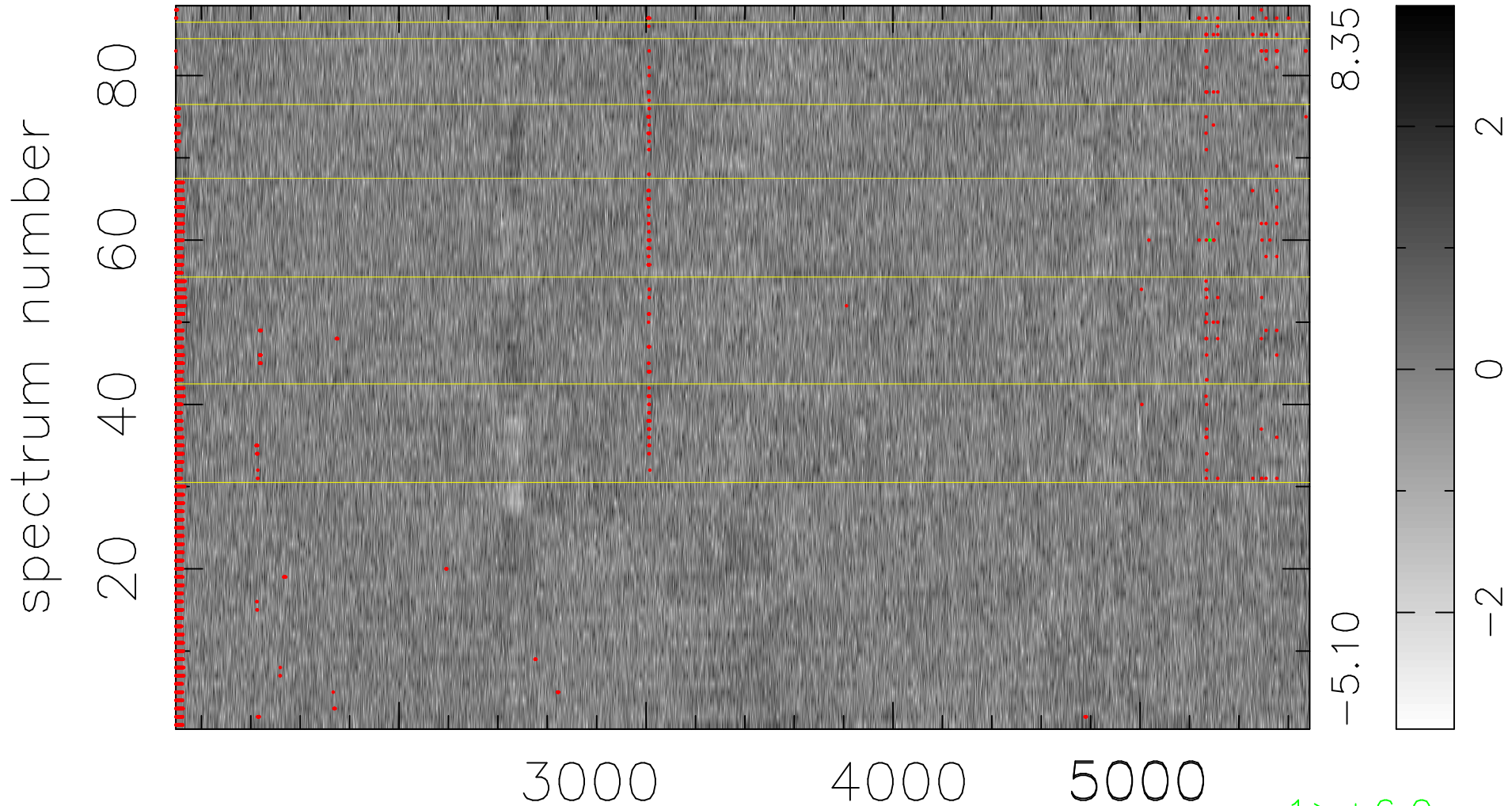


$$\chi(\lambda, t) = ( \text{Data} - \text{Model AC}_5\text{F} ) / \sigma \chi$$

$$\chi^2 / (404008 - 4960) = 1.030 \Rightarrow 1.007$$

4591 × 88



bad:2438=0.60%  $\lambda$  (Å)  $z = 0.75899$