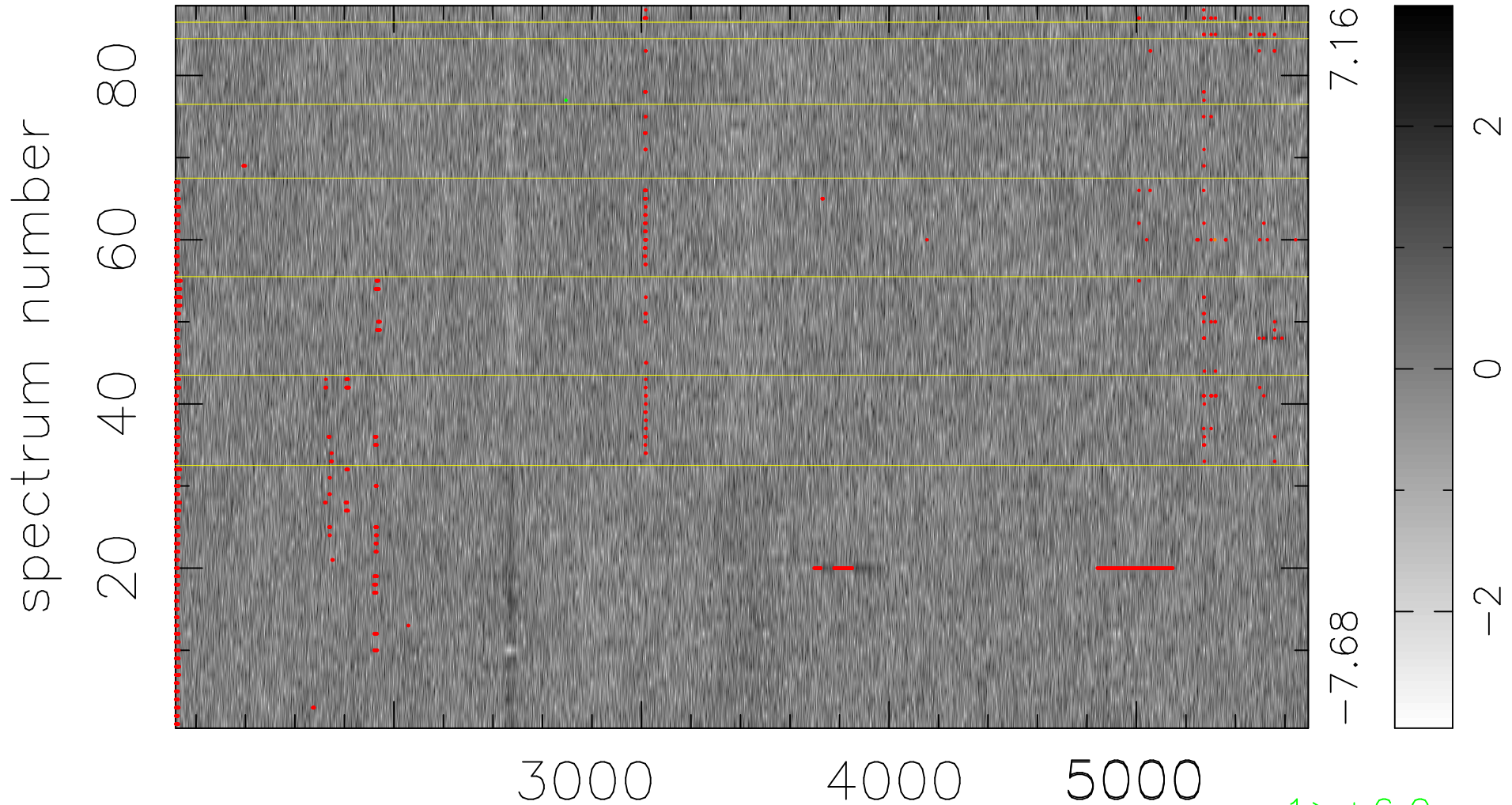


$$\chi(\lambda, t) = (\text{Data} - \text{Model AC}_5\text{F}) / \sigma \chi$$

$$\chi^2 / (402776 - 4957) = 0.986 \Rightarrow 1.007$$

4577x88



bad:1783=0.44% λ (Å) $z = 0.75713$

1 > +6.0 σ

1 < -6.0 σ